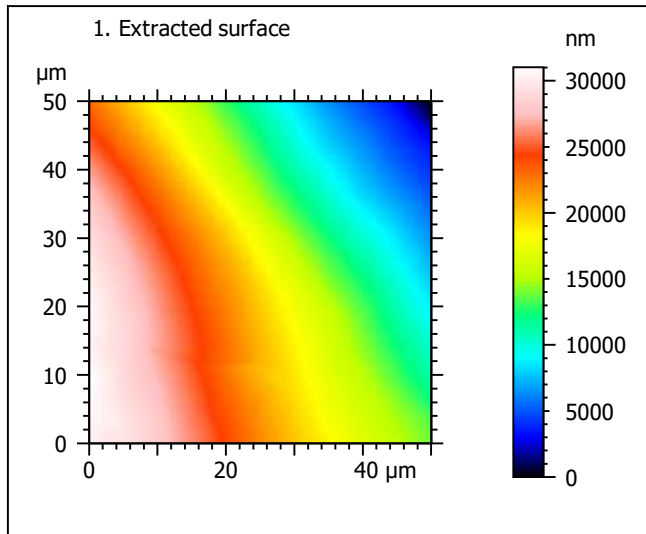
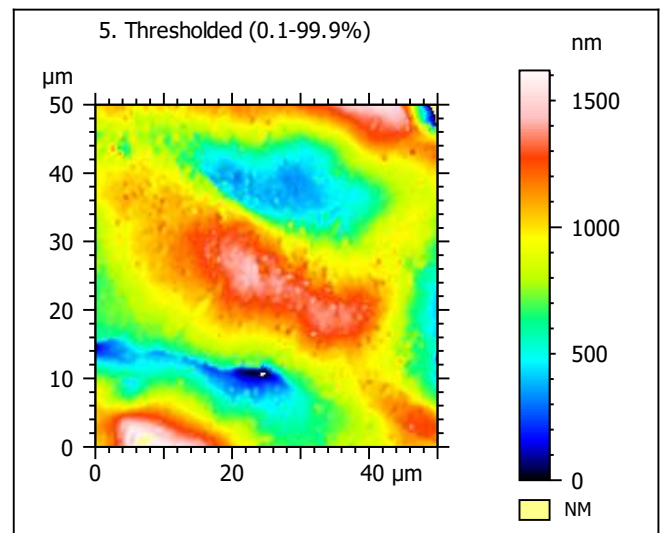
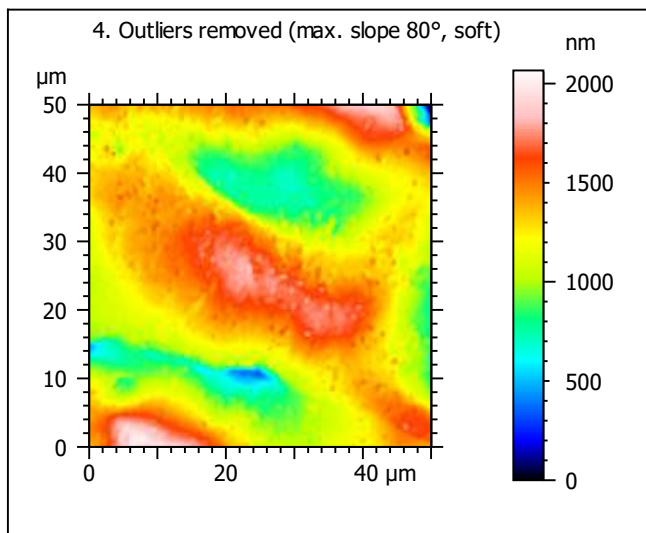
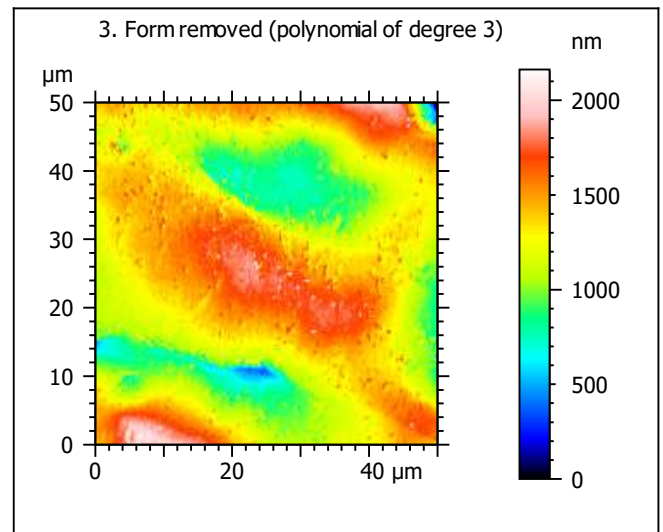
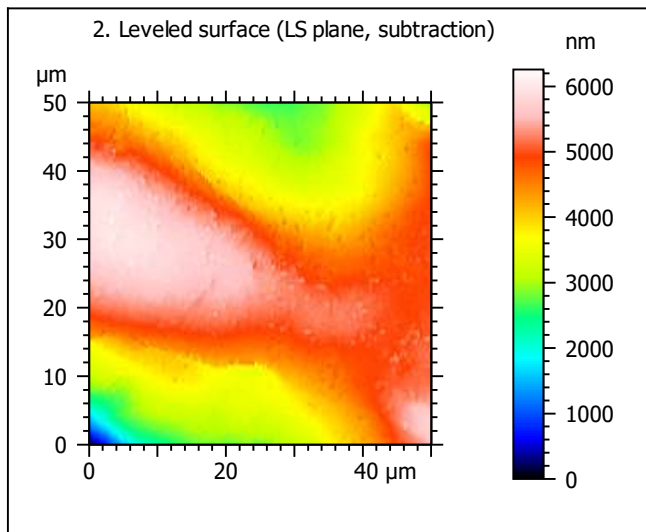


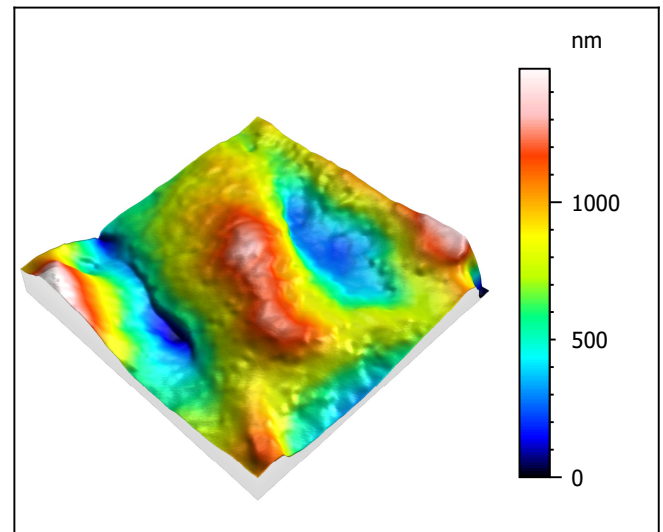
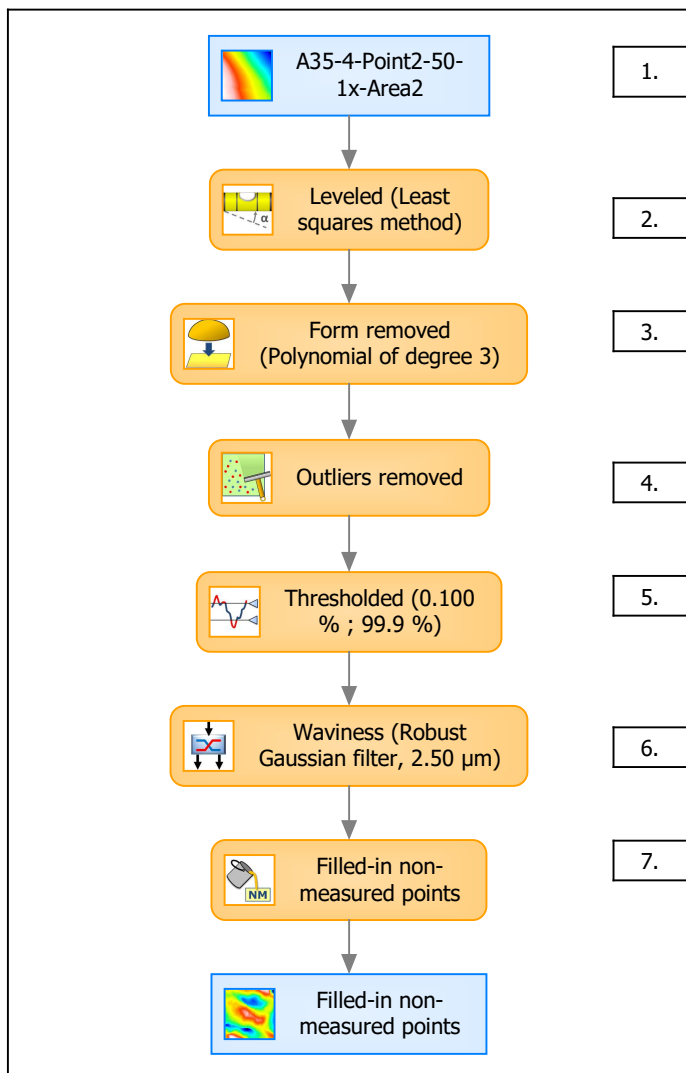
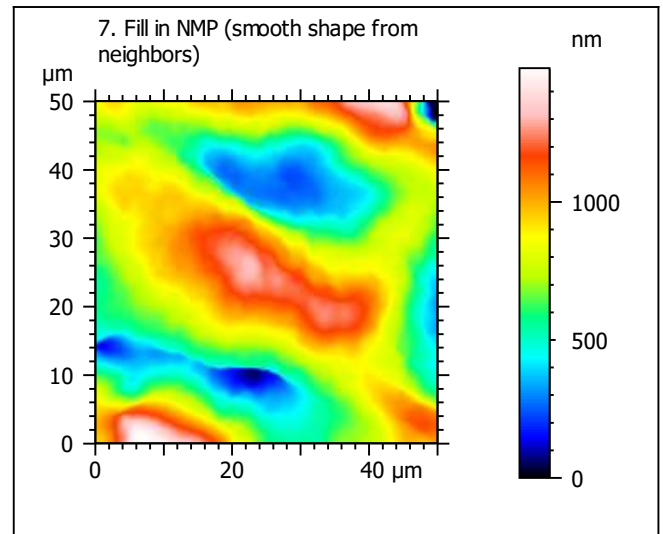
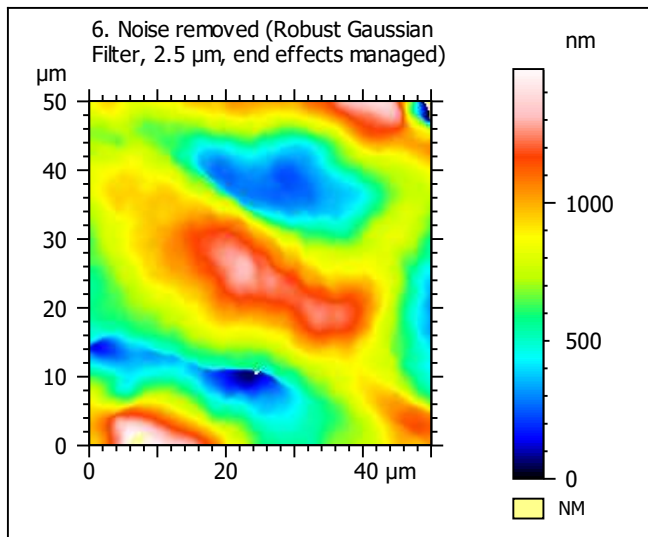
Template to process all extracted 50x50  $\mu\text{m}$  surfaces, acquired with the LEXT 4000 with the 50x/0.95 objective at 1x zoom

## A. Processing



| Identity card |  |        |  |
|---------------|--|--------|--|
| Name:         | A35-4-Point2-50-1x-Area2                       |        |  |
| File path:    | D:\Data\Anto\A...\A35-4-Point2-50-1x-Area2.sur |        |  |
| Axis:         | X  |        |  |
| Length:       | 50.0   | μm     |  |
| Size:         | 201  | points |  |
| Spacing:      | 0.250  | μm     |  |
| Axis:         | Y  |        |  |
| Length:       | 50.0   | μm     |  |
| Size:         | 201  | points |  |
| Spacing:      | 0.250  | μm     |  |
| Axis:         | Z  |        |  |
| Length:       | 31028  | nm     |  |
| Size:         | 14793  | digits |  |
| Spacing:      | 2.10   | nm     |  |
| NMP ratio:    | 0.00 % (0 Pts)                                 |        |  |





| Identity card |  |               |  |
|---------------|--|---------------|--|
| Name:         | A35-4-Point2-50-1x-Area2 > Leveled (Least s... |               |  |
| <b>Axis:</b>  | <b>X</b>                                       |               |  |
| Length:       | 50.0   | $\mu\text{m}$ |  |
| Size:         | 201  | points        |  |
| Spacing:      | 0.250  | $\mu\text{m}$ |  |
| <b>Axis:</b>  | <b>Y</b>                                       |               |  |
| Length:       | 50.0   | $\mu\text{m}$ |  |
| Size:         | 201  | points        |  |
| Spacing:      | 0.250  | $\mu\text{m}$ |  |
| <b>Axis:</b>  | <b>Z</b>                                       |               |  |
| Length:       | 1485   | nm            |  |
| Size:         | 708  | digits        |  |
| Spacing:      | 2.10   | nm            |  |
| NMP ratio:    | 0.00 % (0 Pts)                                 |               |  |

**Analyses:**

**8. ISO 25178**

**9. Furrow**

**10. Texture isotropy and direction**

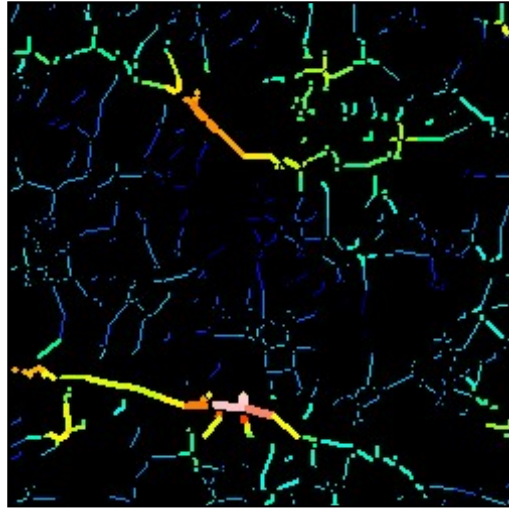
**11. SSFA**

## B. Analyses

### 8. ISO 25178-2 parameters on surface #7

| ISO 25178                      |         |                               |
|--------------------------------|---------|-------------------------------|
| Height Parameters              |         |                               |
| Sq                             | 271     | nm                            |
| Ssk                            | -0.037  |                               |
| Sku                            | 2.50    |                               |
| Sp                             | 717     | nm                            |
| Sv                             | 768     | nm                            |
| Sz                             | 1485    | nm                            |
| Sa                             | 220     | nm                            |
| Functional Parameters          |         |                               |
| Smr                            | 83.4    | %                             |
| Smc                            | 371     | nm                            |
| Sxp                            | 506     | nm                            |
| Spatial Parameters             |         |                               |
| Sal                            | 5.89    | $\mu\text{m}$                 |
| Str                            | 0.322   |                               |
| Std                            | 177     | $^{\circ}$                    |
| Hybrid Parameters              |         |                               |
| Sdq                            | 0.0901  |                               |
| Sdr                            | 0.393   | %                             |
| Functional Parameters (Volume) |         |                               |
| Vm                             | 0.00933 | $\mu\text{m}^3/\mu\text{m}^2$ |
| Vv                             | 0.381   | $\mu\text{m}^3/\mu\text{m}^2$ |
| Vmp                            | 0.00933 | $\mu\text{m}^3/\mu\text{m}^2$ |
| Vmc                            | 0.259   | $\mu\text{m}^3/\mu\text{m}^2$ |
| Vvc                            | 0.351   | $\mu\text{m}^3/\mu\text{m}^2$ |
| Vvv                            | 0.0302  | $\mu\text{m}^3/\mu\text{m}^2$ |

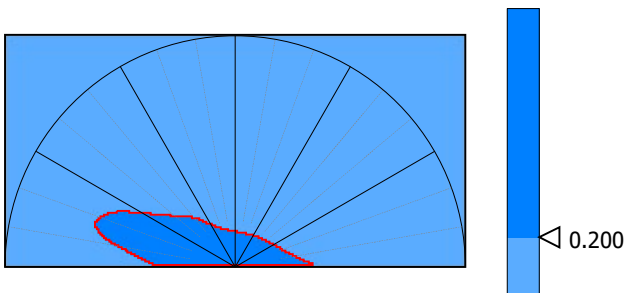
### 9. Furrow analysis surface #7



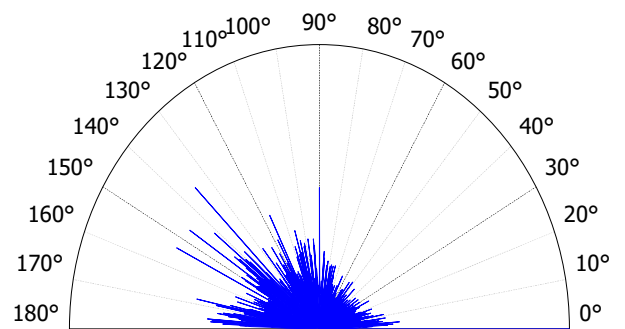
All furrows are shown.

| Parameters               | Value | Unit   |
|--------------------------|-------|--------|
| Maximum depth of furrows | 457   | nm     |
| Mean depth of furrows    | 136   | nm     |
| Mean density of furrows  | 2118  | cm/cm2 |

### 10. Texture isotropy and direction on surface #7



| Parameters          | Value | Unit          |
|---------------------|-------|---------------|
| Isotropy            | 22.3  | %             |
| Periodicity         | ***** | %             |
| Period              | ***** | $\mu\text{m}$ |
| Direction of period | ***** | $^{\circ}$    |



| Parameters       | Value | Unit       |
|------------------|-------|------------|
| Isotropy         | 32.2  | %          |
| First Direction  | 0.113 | $^{\circ}$ |
| Second Direction | 135   | $^{\circ}$ |
| Third Direction  | 154   | $^{\circ}$ |

